

This certificate is valid for building regulations and associated technical guidance in force at the time of the registration and for the regulations in Scotland only

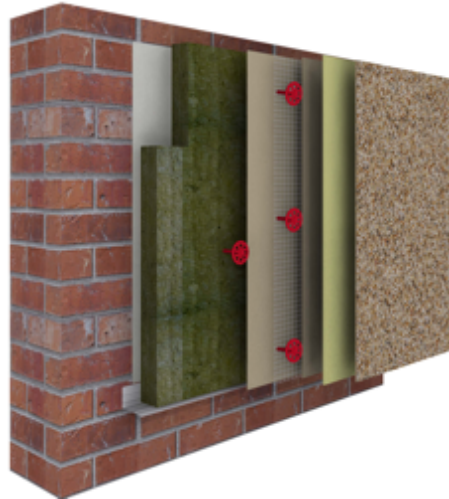
## K Systems DDMW - EWI

### Description of Product

The K-Systems DDMW external wall insulation solution comprises mechanically fixed mineral wool slabs with supplementary adhesive where required, a glass fibre mesh-reinforced basecoat and a render finish. It is suitable for use on the outside of external masonry walls in new or existing domestic and non-domestic buildings with no height restriction.

The system has options for either a silicone or dash finish.

The system has an A2-s1, d0 reaction to fire classification in accordance with BS EN 13501-1: 2007.



### Key factors assessed

- Mechanical Resistance & Stability
- Safety in case of Fire
- Health, Hygiene and Environmental
- Safety in Use
- Energy, Economy and Heat Retention
- Durability serviceability and identification

### Validity

This certificate was first issued on **4 October 2021** and is valid until **3 October 2022**

## Scope of Registration

The system has an A2-s1, d0 reaction to fire classification in accordance with BS EN 13501-1: 2007 and therefore may be used without restriction with regards to height or distance to boundary.

The acceptance of the registered detail for any given project is also conditional on the wider suitability of the existing building to receive external wall insulation system. This suitability must be established by carrying out a thorough assessment of the building. This assessment must form part of the design and specification process to be carried out by K-Systems or their approved contractor for the project, and if it identifies that the building is not suitable to receive the system then this Registered Detail should not be considered applicable.

## Conditions of Certificate

That any site-specific assessment, as referred to under the scope of registration above, shall take cognisance of the local wind loading parameters and any fixings must be designed to withstand such local conditions in every case. Proof of such wind effect assessments and conclusions must be provided by a qualified structural engineer when requested by the building standards verifier.

That a detailed fixings schedule should accompany any submission and a pull-out load /testing regime should be specified irrespective of SER Certification to confirm:

- BBA Certificate compliance;
- Pull out test results (each wall type);
- Detail types of fixings;
- Detail expansion joints

That an engineered approach is required for these installations.

That where no-fines concrete is subject to the application, Structural Engineers input will be required to specify and confirm pull-out tests on a site-specific basis.

That the products used as components of the system shall be manufactured and installed strictly in accordance with the manufacturer's instructions, in accordance with the certificate holder's instructions and fully in accordance with the accredited certification and supporting test reports.

The specifications and materials referred to have been assessed and approved in accordance with the Building (Scotland) Regulations 2004 and in accordance with the supporting guidance in the Domestic Technical Handbooks which came into force with effect from 1 March 2021 (including April 2021 Addendum).

Where reference is made on a plan or specification document to any Code of Practice, British or European Standard or manufacturer's instruction it shall be construed as a reference to such publication in the form in which it is in force at the date of this registered detail.

The materials specified shall not be changed without first gaining approval so to do. Failure to do so will invalidate the registered detail.

This Registered Detail should not be regarded as a formal approval under the building warrant process prescribed by the Building (Scotland) Act 2003 enacted from 1 May 2005. It supports the site-specific building warrant submission required in every case.

This Registered Detail shall contribute to compliance with relevant Mandatory Standards specified under the Building (Scotland) Regulations 2004 as amended when read with the Scope of Registration and the Conditions of Certificate Sections to this Registered Detail.

## Regulations



LABSS consider that, the K-Systems EPS/Grey EPS External Wall Insulation System, will meet the functional requirements of the Building Regulations (listed below) if the criteria detailed in this certificate are met.

### **The Building (Scotland) Regulations 2004 (as amended)**

Technical Handbooks – Domestic and Non -Domestic

#### **Regulation 8 Durability, workmanship and fitness of materials**

0.8.5: Ways of establishing the fitness of materials

#### **Regulation 9 Building Standards applicable to construction**

Construction shall be carried out so that the work complies with the applicable requirements of schedule 5.

#### **Mandatory Standard 1.1 Structure**

1.1.0 Introduction

1.1.1 General

1.1.2 Loading

1.1.3 Design and construction

Note: This standard is subject to site specific assessments and is therefore not covered by this Registered Detail.

Note: The acceptance of the registered detail for any given project must remain conditional on the wider suitability of the existing building to receive the external wall insulation system. This suitability must be established by carrying out a thorough assessment of the building. This assessment must form part of the design and specification process to be carried out by K-Systems or their approved contractors for the project, and if it identifies that the building is not suitable to receive the system, then this Registered Detail should not be considered applicable.

#### **Mandatory Standard 2.1: Compartmentation; Mandatory Standard 2.2: Separation; Mandatory Standard 2.3: Structural Protection and Mandatory Standard 2.9: Means of Escape.**

Note: This certificate only covers this system as a fully adhered application and requires that cognisance is taken of the maintenance of fire-resistant integrity at all separating / compartment wall / floor junctions and at protected zones around escape routes within buildings to meet the above Mandatory Standards

#### **Mandatory Standard 2.4 Cavities**

2.4.1 Cavity barriers

Note: This certificate only covers this system as a fully adhered application and as such no cavity will be created between the wall substrate and the cladding. This standard would apply only in the event of a physical cavity being created by the installation.

#### **Mandatory Standard 2.6 Spread to neighbouring buildings and Mandatory Standard 2.7 External cladding**

Note: This system has achieved a classification of A2-s1, d0 when tested in accordance with Classification of Reaction to Fire Performance BS EN 13501- 1:2007+A1 2009. This will meet the requirements of Mandatory Standard 2.6: Spread to Neighbouring Buildings and Mandatory Standard 2.7: External Cladding.

#### **Mandatory Standard 3.10 Precipitation**

The system can contribute to satisfying this Standard.

**Mandatory Standard 3.15 Condensation (Domestic)**

The system will contribute to satisfying this Standard

**Mandatory Standard 6.1(b) and 6.2**

The system can contribute to satisfying these Standards

**The Building Regulations 2010 (as amended) England & Wales****The Building Regulations 2010 (as amended) England**

If you would like to discuss a specific use of the product in England it will require an additional assessment under the English Building Regulations and accordingly, you should contact the LABC

**The Building Regulations 2010 (as amended) Wales**

If you would like to discuss a specific use of the product in Wales, it will require an additional assessment under the Welsh Building Regulations and accordingly you should contact the LABC Cymbru

## Supporting Information

- BBA Agreement Certificate 18/5570 (product sheets 5 and 6)
- Rockwool – Mineral wool thermal insulation EC certificate of conformity and declaration of performance
- K Systems M Dash Standard Detail Pack
- K Systems M Thin Coat Standard Detail Pack
- K Systems M Dash Specification
- K Systems M Silicone Specification
- Exova Report 319309 – Classification of Reaction to Fire Performance in Accordance with EN 13501-1:2007+A1:2009.

## Contact Information

K Systems  
17 Lambhill Quadrant,  
Milnpark Trading Estate,  
GLASGOW,  
G41 1SB  
0141 847 3453  
[Jim.Mullen@kilwaughter.com](mailto:Jim.Mullen@kilwaughter.com)  
[Michael.Hunter@kilwaughter.com](mailto:Michael.Hunter@kilwaughter.com)